



Celebrating 30 Years In Our Community

FISCAL YEAR IN REVIEW

JULY 1, 2020 - JUNE 30, 2021





Today our world is swimming in violence.

In an individual way this is experienced and inflicted on lives, in homes and throughout neighborhoods across our community. Violence's ripple effect turns into data - the number of assaults in Kent County or the 2,700 crisis contacts we received this year from individuals needing support. As Brene Brown says, "Stories are data with a soul". The stories, domestic violence, leaves us unsettled.

Today, we recognize God's movement is constant even in the depths and pain. When we are attentive to see, listen, and recognize the ways He is inviting us to respond, we build an alternative reality to crisis and violence, and instead focus on safety and kindness. Safe Haven's work has always been understood through the complex intersections of paradox and possibility.

We are moving into this next season with confidence that God is already moving ahead of us. To do this work is to dismantle violence and address the brokenness that weighs heavily, fuels inequity and stands to paralyze. Yet when a networked community builds the capacity of young leaders, engages intentionally to offer inclusive and accessible services and advocates, people, neighborhoods and our community flourish.

We are in the next season of our story and we are so grateful for you. Our invitation is for each one of you to catalyze the next chapter that sparks a continuation of the beautiful brave work our community needs to prevent and end abuse, violence and exploitation.

A handwritten signature in black ink that reads "Rachel VerWys, MDW". The signature is fluid and cursive.

Rachel VerWys
Executive Director

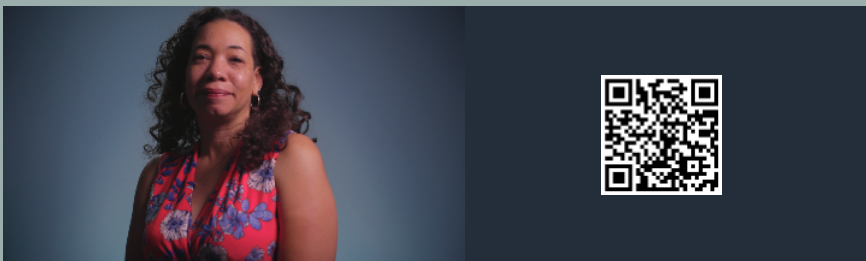


HOPE FOR HEALING

Many of us have faced uncertainty, exhaustion, and worry throughout our lives. This is especially true in the last year. The survivors that Safe Haven Ministries walks alongside have experienced heightened uncertainty as they face barriers to find freedom from relationship abuse. Our community experiences violence and its ripple effects far too often, disrupting children's and families' lives daily.

Through this, we see opportunities for change and hope for healing. We believe that through education, community collaboration, and advocacy, we can create a reality without violence.







Scan the QR code below using your cell phone's camera to view a brief video that shares the meaningful stories of survivors of relationship abuse, and the impact Safe Haven has made in their lives.



CLIENT & HOUSING SERVICES

Services include crisis support and safety planning, case management, advocacy, adult and youth support groups, emergency safe shelter, rapid and permanent housing supports.

The complexity of needs that domestic violence victims experience have grown and are further compounded by COVID-19. In the past 18-months, Safe Haven advocates have reported nearly a 30% increase for time spent responding to each individual crisis need via the 24/7 hotline, text and chat services.

Number of crisis contacts (via hotline, in person, text, web chat) (Of those callers 948 requested shelter)	
Total clients served in shelter	
Number of households who benefited from shelter (9 Families received new supportive services for permanent housing support through HUD)	
Number of children served in shelter	
Average number of nights per stay	
Number of individuals receiving nonresidential services	

“ Out of all the years I have dealt with the monsters of addiction and domestic violence, I have never felt as believed or cared for as I have during my time at Safe Haven.
 - Former Safe Haven Client -

Safe Haven allowed me the space and safety to find the pieces of myself that were missing by experiencing the intimate terror of domestic violence. I continued to attend groups after my stay in shelter and my kids participated in the “I Feel Better Now” group that helped them process their own feelings and memories as well. I am grateful to Safe Haven for creating the safety and encouragement I needed to get my life back!

- Former Safe Haven Client - ”

PREVENTION & EDUCATION

Services this year included Church Certification, Domestic Violence training across industry sectors, Gender Equity Reading Initiative, Teen Dating Violence Prevention, and Young Leaders Against Violence

60 TRAININGS	Domestic Violence Prevention trainings
1,306 INDIVIDUALS	Community members reached through training sessions
172 STUDENTS	Students reached through Teen Dating Violence Prevention sessions stopping violence before it begins
2,596 BOOKS	Distributed through Safe Haven’s Gender Equity Reading Initiative

In FY 2021, Safe Haven strengthened its partnership with the Grand Rapids Public Library. In addition to partnering with the library to distribute Gender Equity Reading Initiative books and reading guides to its patrons, library staff also participated in domestic violence training. During this training, Safe Haven equipped library staff with the skills and knowledge to support patrons that present at the library in a domestic violence crisis.



After listening to the stories, head over to our website for additional activities and resources:
www.gerigr.org

STRATEGIC PARTNERSHIPS

Prior to the pandemic, Safe Haven completed a 3-year strategic plan. One underlying theme that continued to emerge throughout the process was that **our success and that of our clients is dependent upon strong strategic community partnerships.** In addition to the investment our donors make, equally paramount is the deep commitment partnering nonprofits and social service agencies in West Michigan have made to Safe Haven.

We believe our focused efforts in building strong partnerships is not only critical for our success, but is essential in reducing violence in our community.

TOP 5 REFERRALS INCLUDED

- 1) Homeless or other housing requests
- 2) Other domestic violence agencies when we are at capacity or the caller is out of county
- 3) Legal Advocacy
- 4) Social Service Agencies
- 5) Mental Health/Counseling Services

Even in the midst of a pandemic, **38 volunteers** contributed **2,115 hours**, saving an equivalent of **\$60,362**





CELEBRATING 30 YEARS IN OUR COMMUNITY

In 1989, the social justice committee at Shawnee Park CRC began discussing unmet needs in our community. After conversations with other domestic violence experts in the area, including the YWCA West Central Michigan, the need for additional safe shelter was identified. Shawnee Park invited five other churches to join them in purchasing a modest home in Grand Rapids to serve as a shelter for women and children. The home was purchased in 1990 and was named Ramoth House, after one of the biblical cities of refuge. This was the start of Safe Haven Ministries.

This year we celebrated our 30th anniversary serving domestic violence survivors and their children. Our services are now comprehensive and open to all. We meet survivors and their children where they are to provide expertise in trauma-informed, survivor centered care. Services are available both in emergency safe shelter, and in a nonresidential setting for those who already have safe housing but need additional supports. In 1999, Safe Haven added Prevention & Education programming which continues to grow and thrive. Through Prevention & Education we are able to stop violence before it begins and reimagine a safe, protective community.

For 30 years, hundreds of volunteers, donors, and community partners have walked along side of Safe Haven to do this work. We do this work every day so that everyone understands they are worthy and deserving of a safe and healthy relationship. As our community strives towards being a safe haven for all, we invite you to deepen your relationship with us. How will you be a part of the next 30 years?



Safe Haven Ministries, 1990



Safe Haven Ministries, 2021



Safe Haven Ministries, 2007

2025 STRATEGIC VISION



Advocates for Systems Change

Leadership at multiple community tables, coalitions, and spaces



Survivor Centered Services

Comprehensive supportive services in ways survivors identify best for them



Responsive & Mobile Advocacy

Meeting survivors in the community to remove barriers to service



Comprehensive Housing

Emergency safe shelter, transitional and leasing options for clients

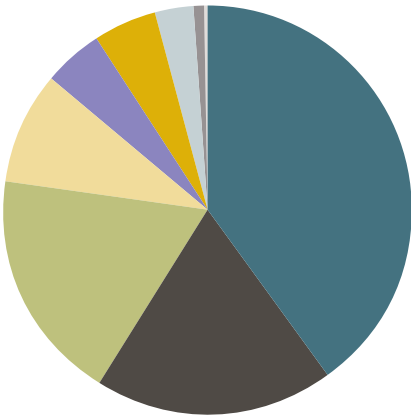


Multisector Training Institute

Health care, work places, faith communities, education and more

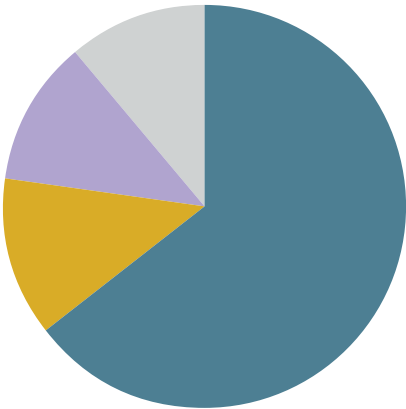
FISCAL YEAR 2021 REVIEW

We believe strategic financial decisions, good governance and development of meaningful partnerships are vital to our organization.



REVENUE

Individual	869,776	40 %
Foundations	410,144	19%
Government Grants	403,594	19%
Paycheck Protection Program Forgiven Loan	192,102	9%
In-kind	103,199	5%
Business	107,636	5%
Churches	67,590	3%
Gains/Losses	13,364	1%
Program Fees	5,400	0%
TOTAL		2,172,805



EXPENSES

Program Services	1,187,387	65%
Management and General	233,769	13%
Fundraising	212,182	11%
Depreciation	201,409	11%
TOTAL		1,834,747



DONOR APPRECIATION

Throughout the pandemic, Safe Haven Ministries continued to provide essential services for individuals and families experiencing domestic violence.

Recognizing that violence in our community has increased and many systems work with domestic violence clients face new challenges, our ability to provide comprehensive services is a credit to you, our donors. As we celebrate 30 years in our community, we also celebrate you. Thank you for walking alongside Safe Haven in this important work.

Thank You!



BOARD OF DIRECTORS

Chaz Amidon, President

Shannon Vinson, Vice President

Jodi Rothenthaler, Treasurer

Mike Wiese, Secretary

Maleika Brown

Esperanza Degnan

Joan DeVries

Thelma Ensink

Mike Rundhaug

Allie Walker

[SAVE HAVEN STAFF, 2021]



2627 Birchcrest Dr SE, Grand Rapids, MI 49506
p. 616.452.6664 • f. 616.452.1168 • e. info@shmgr.org
www.shmgr.org